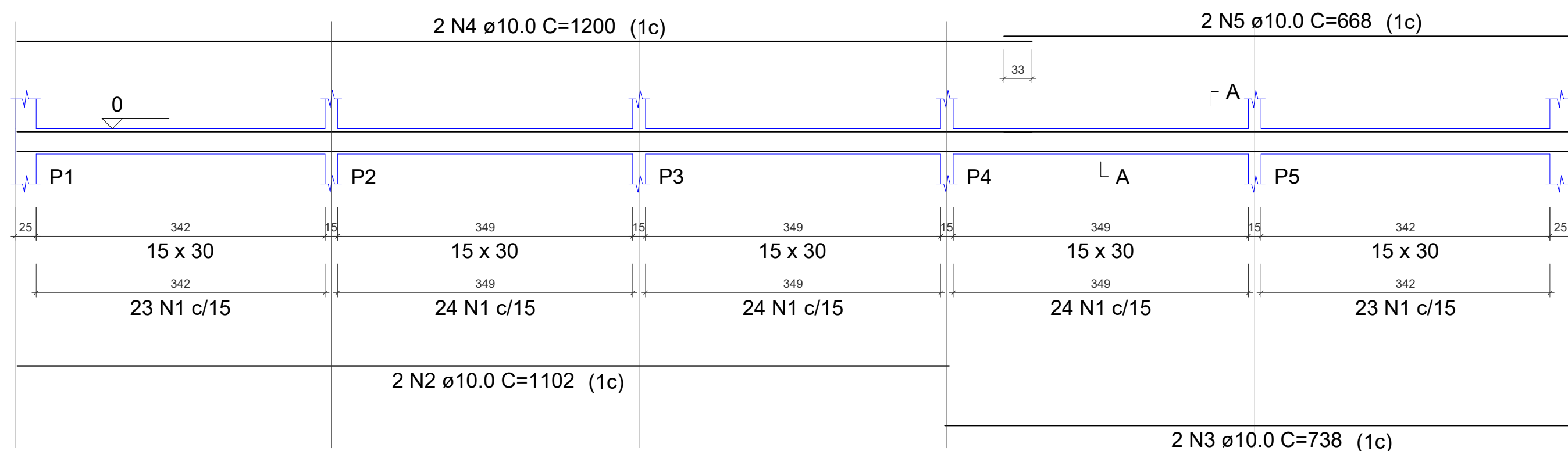
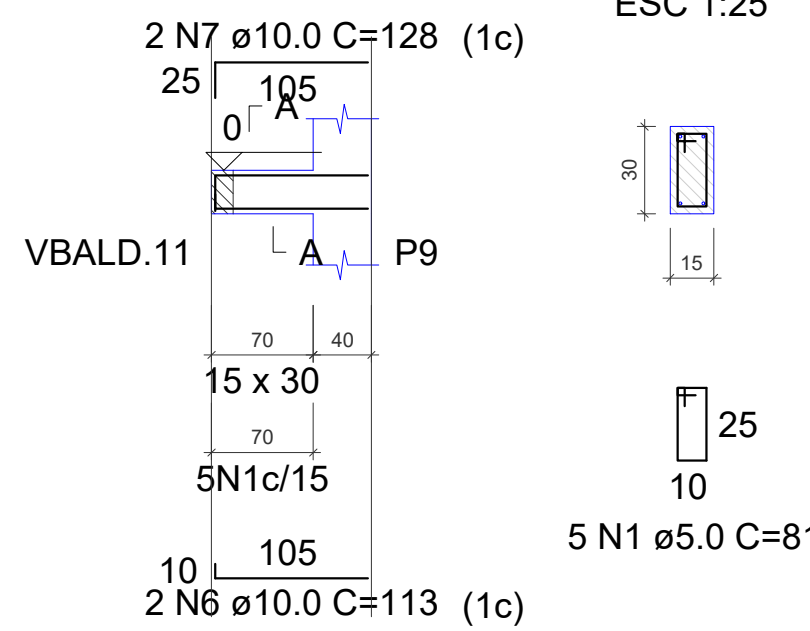
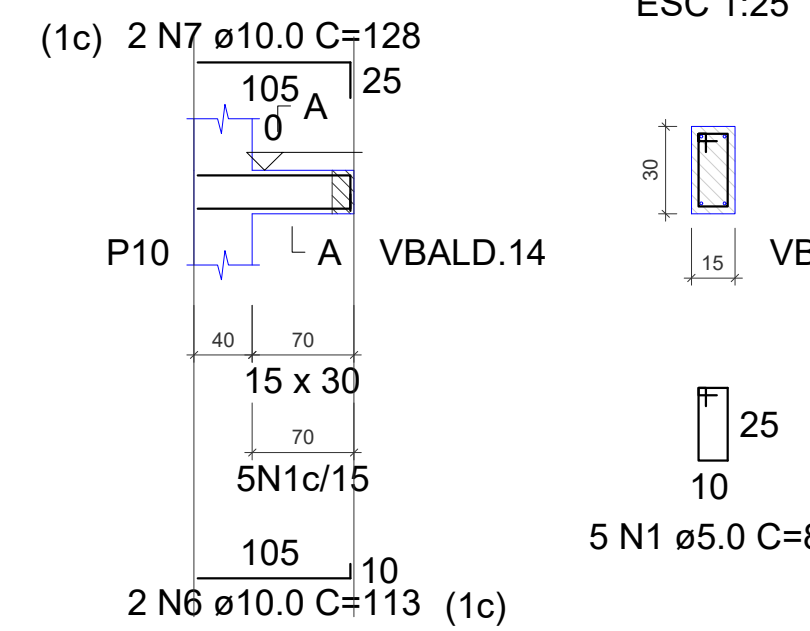
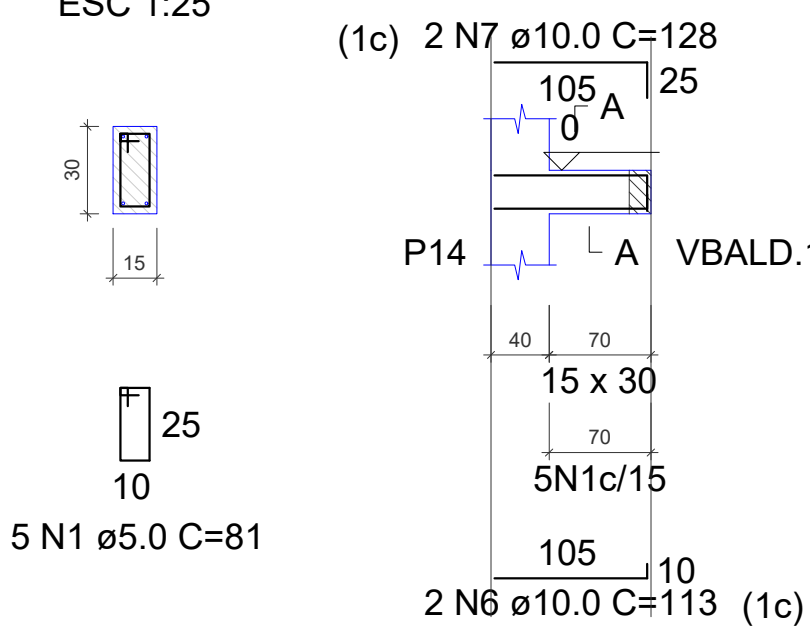
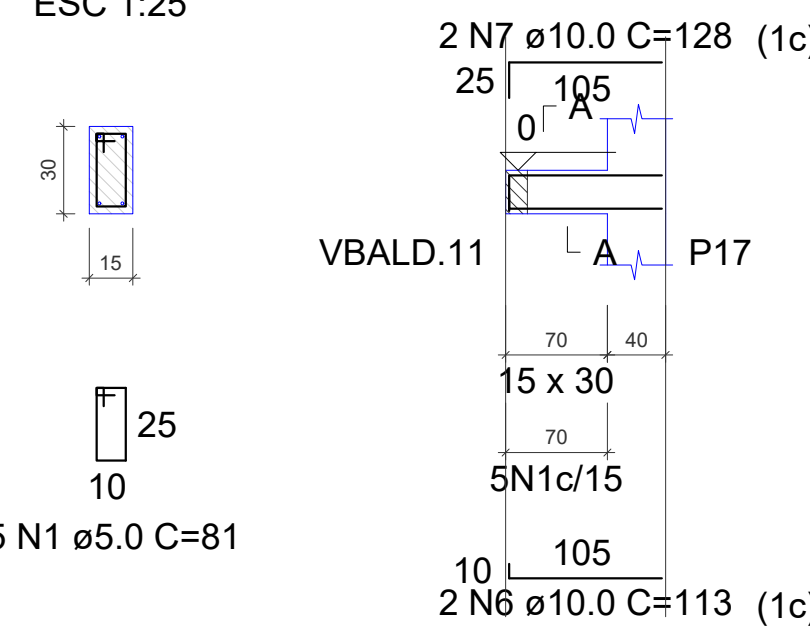
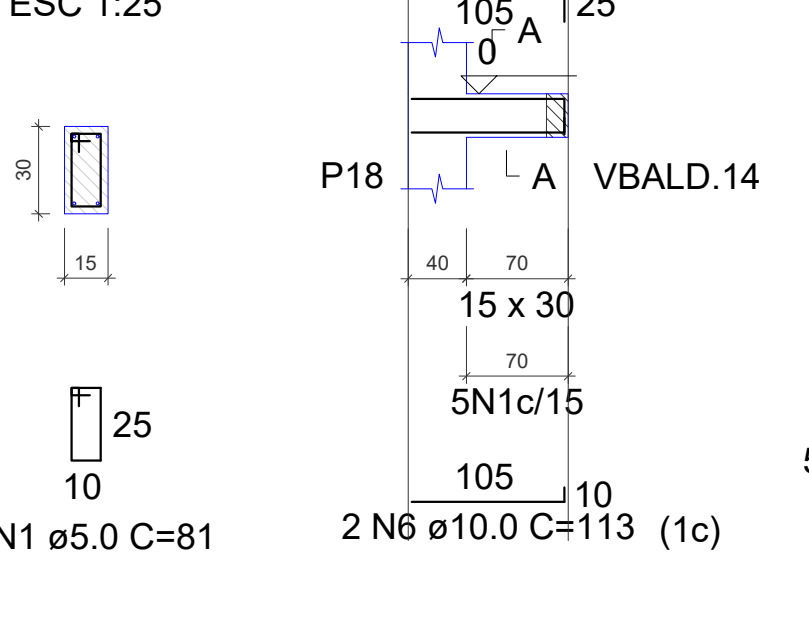
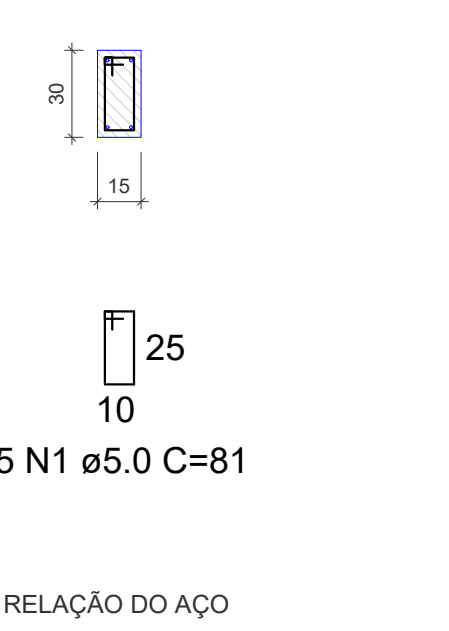
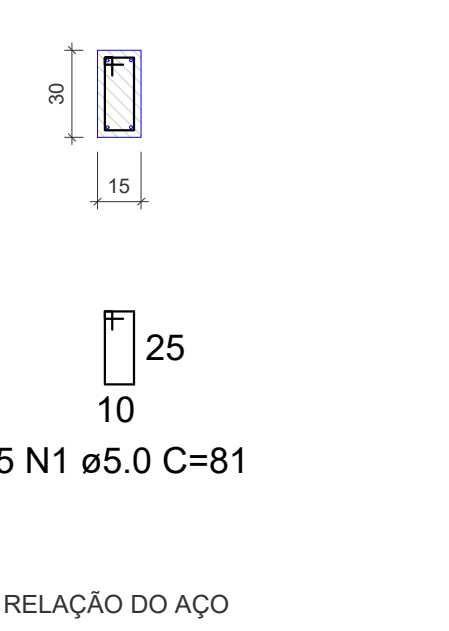
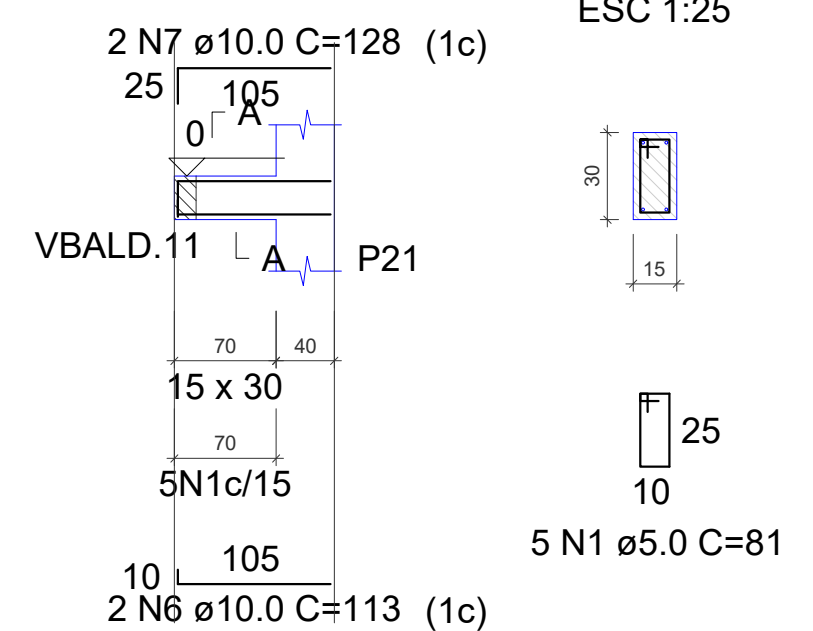
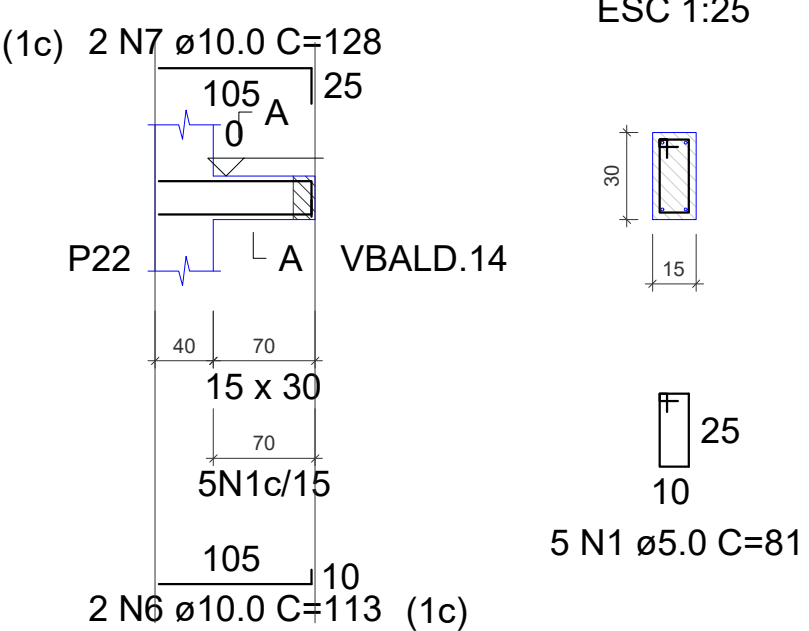
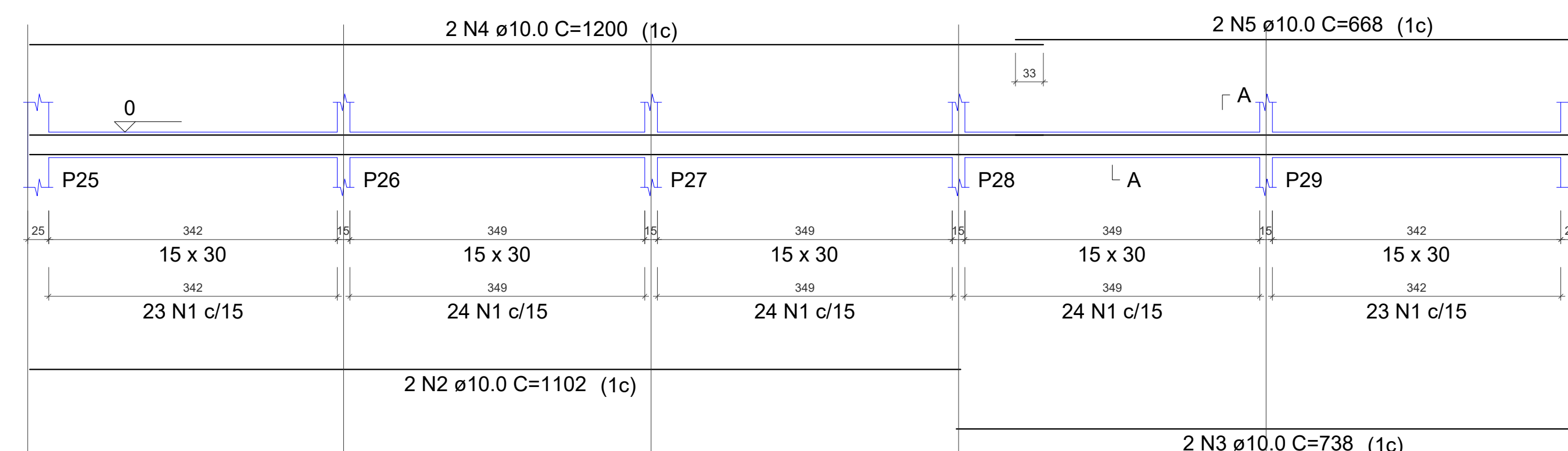
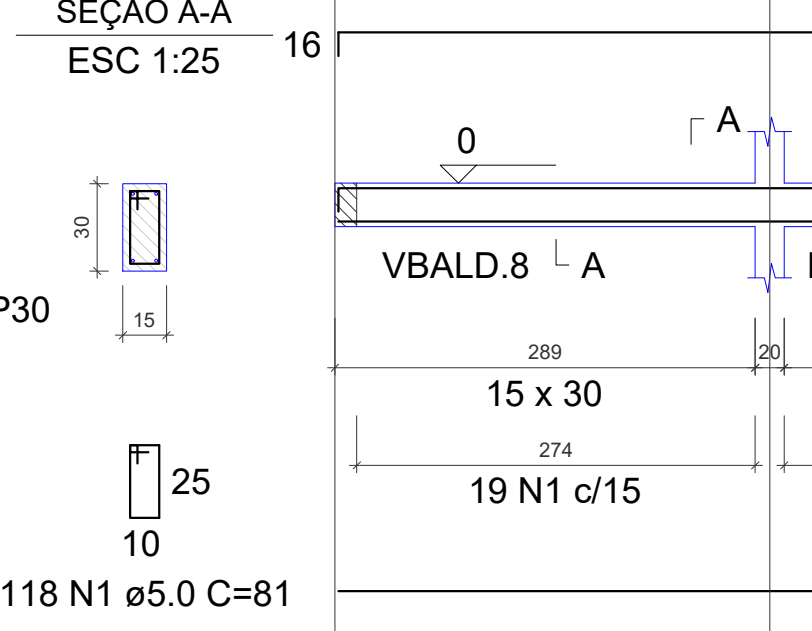
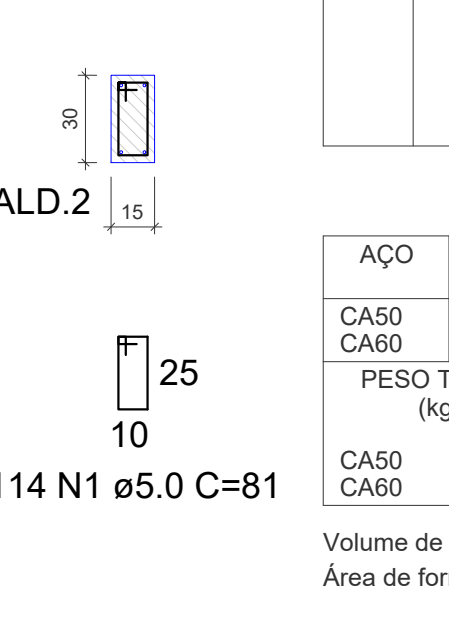
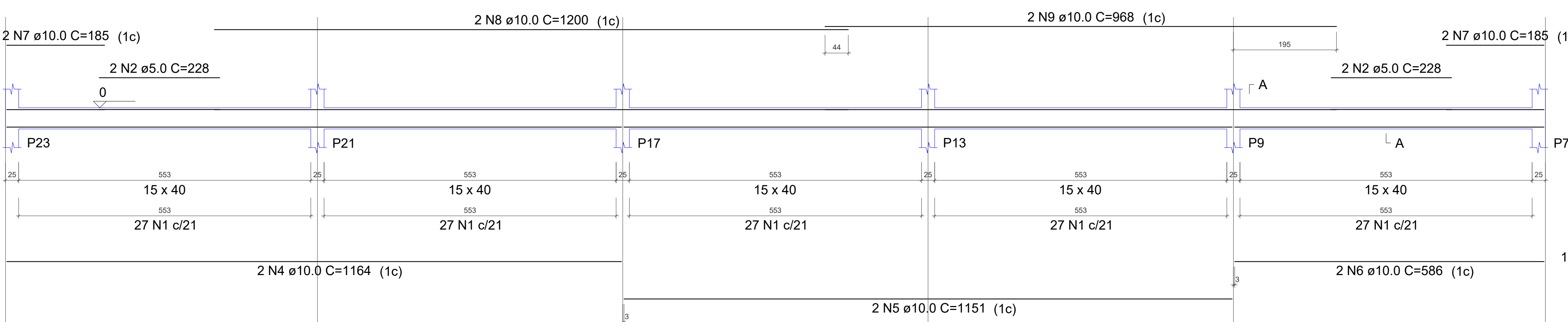
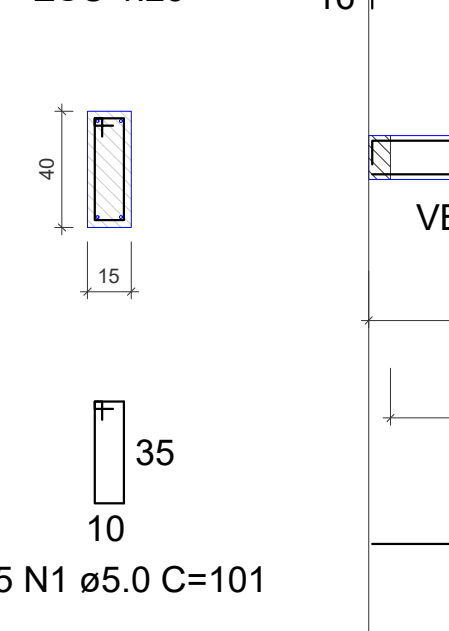
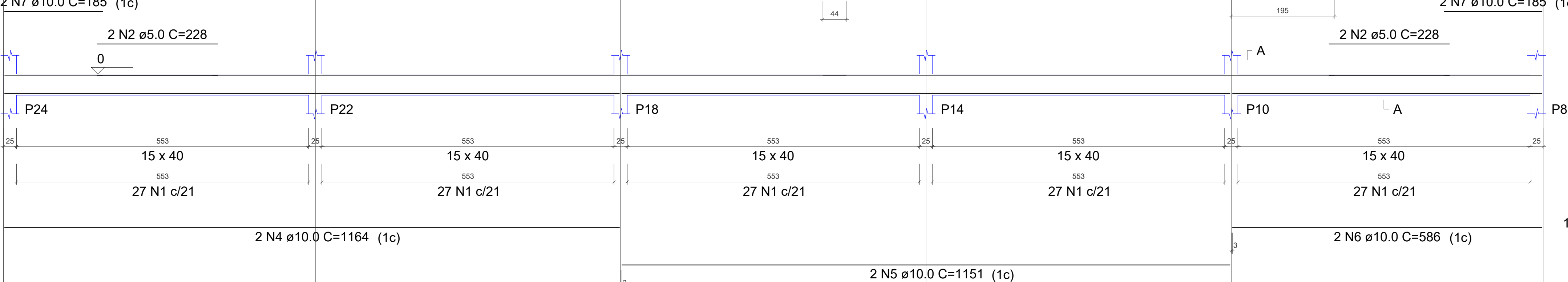
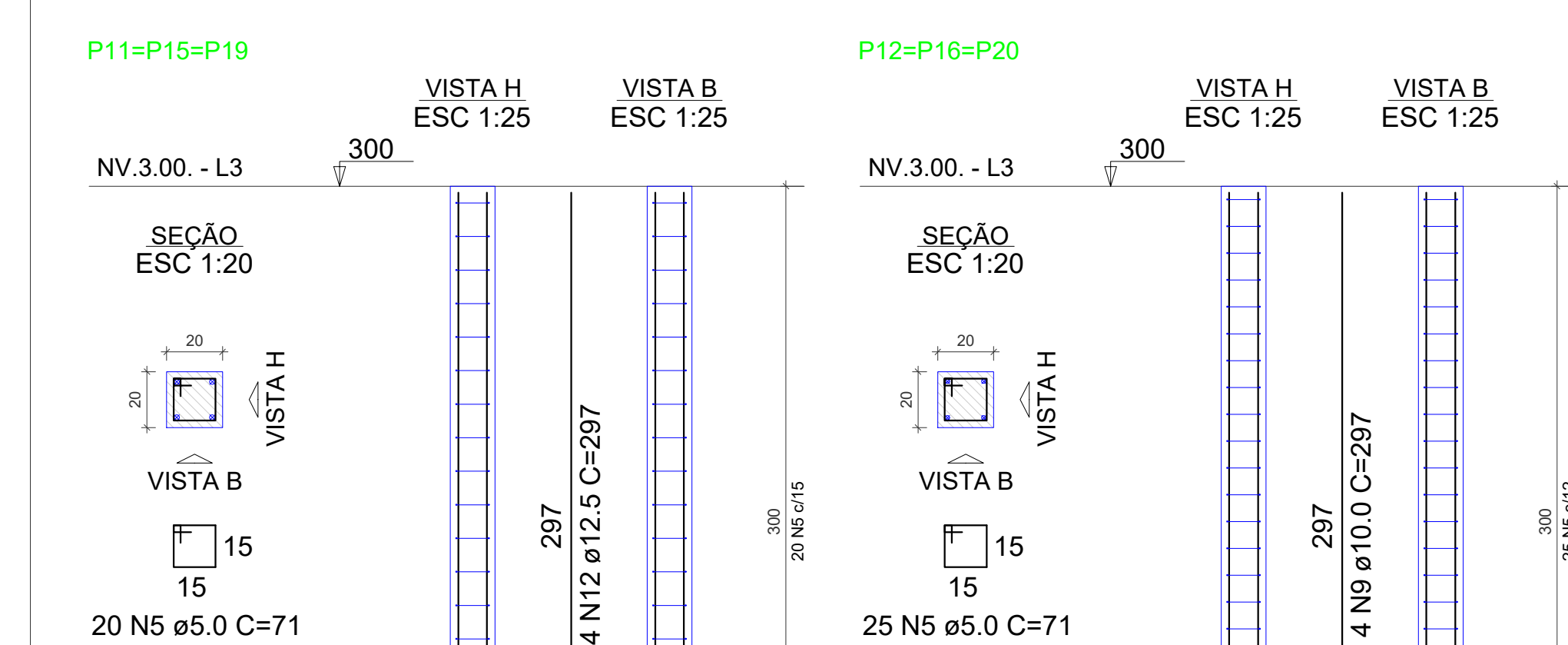
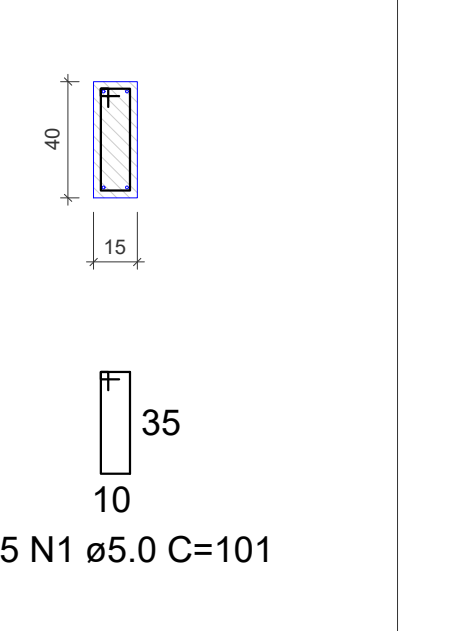
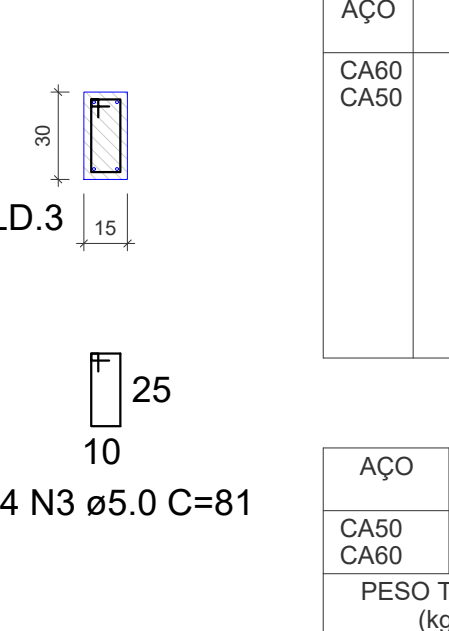


VBALD.1
ESC 1:50VBALD.2
ESC 1:50VBALD.3
ESC 1:50VBALD.4
ESC 1:50VBALD.5
ESC 1:50VBALD.6
ESC 1:50VBALD.7
ESC 1:50SEÇÃO A-A
ESC 1:25VBALD.8
ESC 1:50VBALD.9
ESC 1:50VBALD.10
ESC 1:50VBALD.11
ESC 1:50SEÇÃO A-A
ESC 1:25VBALD.12
ESC 1:50SEÇÃO A-A
ESC 1:25VBALD.13
ESC 1:50SEÇÃO A-A
ESC 1:25SEÇÃO A-A
ESC 1:25

RELAÇÃO DO AÇO

AÇO	N	DIAM (mm)	QUANT	C.UNIT (cm)	C.TOTAL (cm)
CA60	1	5.0	270	101	27270
CA60	2	5.0	8	228	1824
CA50	3	5.0	114	81	9234
CA50	4	10.0	4	1164	4656
CA50	5	10.0	4	1151	4604
CA50	6	10.0	4	968	3872
CA50	7	10.0	8	185	1480
CA50	8	10.0	4	1200	4800
CA50	9	10.0	4	968	3872
CA50	10	10.0	2	1166	2332
CA50	11	10.0	2	588	1176
CA50	12	10.0	2	1198	2396
CA50	13	10.0	2	614	1228

RESUMO DO AÇO

AÇO	DIAM (mm)	C.TOTAL (m)	PESO + 10% (kg)
CA50	10.0	286.9	195.9
CA60	5.0	383.3	65
PESO TOTAL (kg)			195.9
CA50			65
CA60			65

Volume de concreto (C-25) = 4.29 m³
Área de forma = 68.54 m²

RELAÇÃO DO AÇO

AÇO	N	DIAM (mm)	QUANT	C.UNIT (cm)	C.TOTAL (cm)
CA60	1	5.0	390	81	31590
CA60	2	10.0	4	1102	4408
CA50	3	10.0	4	738	2952
CA50	4	10.0	4	1200	4800
CA50	5	10.0	4	668	2672
CA50	6	10.0	16	113	1808
CA50	7	10.0	16	128	2048
CA50	8	10.0	2	1166	2332
CA50	9	10.0	2	588	1176
CA50	10	10.0	2	1198	2396
CA50	11	10.0	2	614	1228

RESUMO DO AÇO

AÇO	DIAM (mm)	C.TOTAL (m)	PESO + 10% (kg)
CA50	10.0	258.2	175.1
CA60	5.0	315.9	53.6
PESO TOTAL (kg)			175.1
CA50			53.6
CA60			53.6

Volume de concreto (C-25) = 2.84 m³
Área de forma = 47.36 m²

